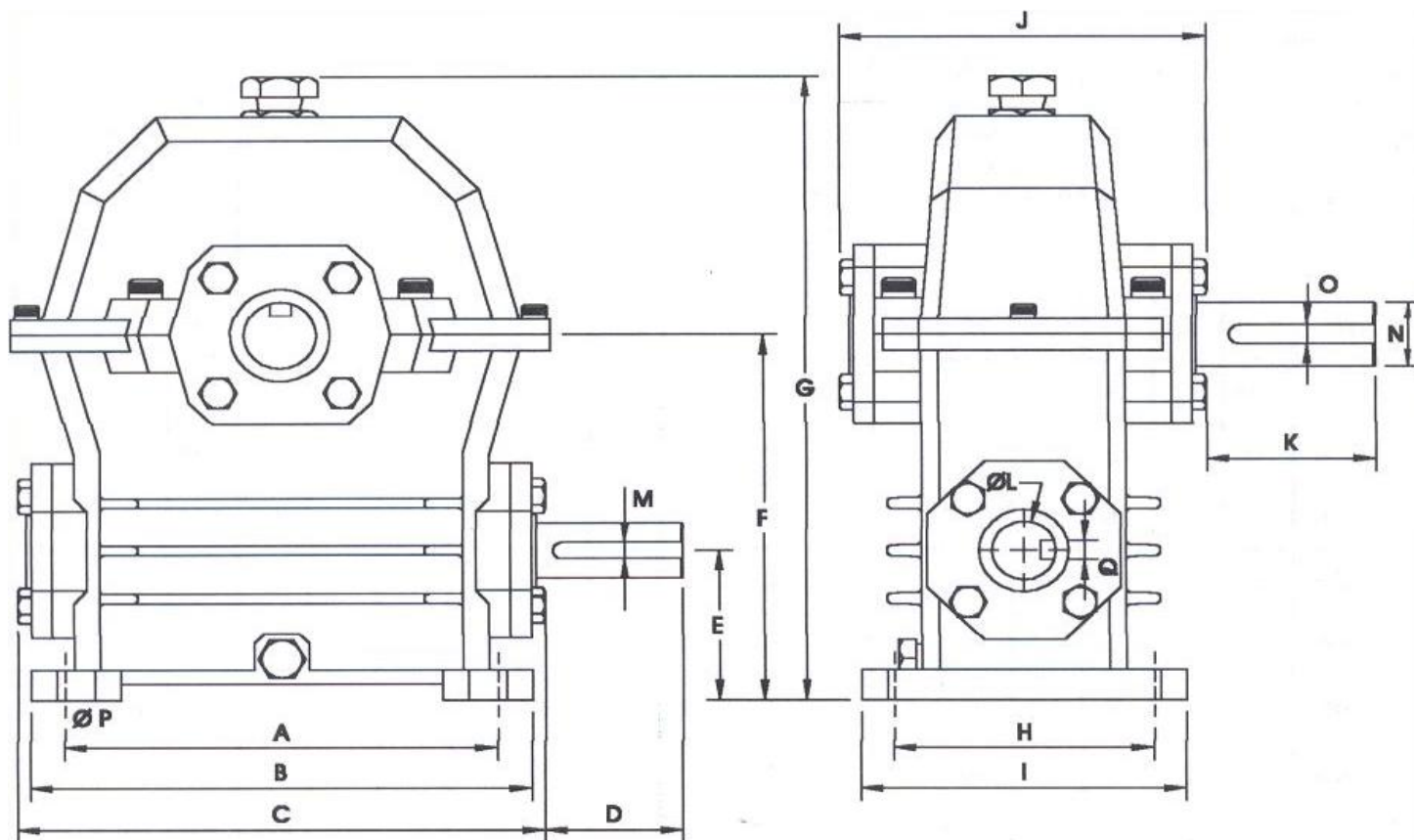


REDUCTORES DE VELOCIDAD A SIN FIN Y CORONA HORIZONTAL



DIMENSIONES

| MOD | A | B | C | D | E | F | G | H | I | J | K | L | M | N | O | P | Q |
|------|-----|-----|-----|------|-------|-------|-----|-----|-----|-----|------|----|----|-----|----|------|----|
| P 05 | 93 | 120 | 145 | 30 | 35 | 85 | 158 | 70 | 88 | 90 | 50 | 12 | 4 | 17 | 5 | 9 | 4 |
| P 07 | 114 | 148 | 168 | 44.5 | 47 | 112 | 200 | 91 | 110 | 129 | 61 | 17 | 5 | 25 | 8 | 10.5 | 5 |
| P 1 | 135 | 159 | 184 | 59 | 55 | 132.5 | 228 | 110 | 135 | 145 | 72.5 | 20 | 6 | 25 | 8 | 12 | 6 |
| P 2 | 162 | 193 | 220 | 80 | 64 | 164 | 277 | 132 | 160 | 166 | 92 | 30 | 8 | 35 | 10 | 14 | 8 |
| P 3 | 241 | 280 | 292 | 87 | 94 | 229 | 380 | 150 | 194 | 211 | 108 | 35 | 10 | 40 | 12 | 18 | 10 |
| P 4 | 255 | 342 | 380 | 97 | 95 | 265 | 474 | 205 | 257 | 240 | 130 | 45 | 14 | 50 | 14 | 22 | 14 |
| P 5 | 307 | 442 | 450 | 120 | 120.5 | 325 | 557 | 247 | 290 | 292 | 162 | 50 | 14 | 60 | 16 | 22 | 14 |
| P 6 | 444 | 520 | 600 | 160 | 148 | 408 | 738 | 320 | 400 | 404 | 170 | 55 | 16 | 75 | 20 | 34 | 16 |
| P 8 | 580 | 680 | 800 | 178 | 182 | 522 | 940 | 410 | 510 | 422 | 217 | 75 | 20 | 110 | 28 | 34 | 20 |

Todas las medidas están dadas en mm.

ANGEL LARREINA S.A.

Moreno 901 (C1091AAS) - Buenos Aires
Tel.: 011-4334-2808 - Fax: 011-4334-3480

<http://www.angellarreina.com>
Email: ventas@angellarreina.com

REDUCTORES DE VELOCIDAD A SIN FIN Y CORONA HORIZONTAL

TABLA DE POTENCIA

| Relación | 1:10 | | | 1:20 | | | 1:30 | | | 1:40 | | | 1:50 | | | 1:60 | | | |
|-------------|------|------|------|------|------|------|------|------|------|------|------|------|------|------|------|------|------|------|----|
| | rpm | hp | rend | s | hp | rend | s | hp | rend | s | hp | rend | s | hp | rend | s | hp | rend | s |
| P 05 | 1400 | 0.9 | 86 | 140 | 0.58 | 81 | 70 | 0.4 | 73 | 47 | 0.3 | 70 | 35 | 0.22 | 67 | 28 | 0.18 | 61 | 23 |
| | 1000 | 0.75 | 84 | 100 | 0.42 | 79 | 50 | 0.31 | 71 | 33 | 0.22 | 68 | 25 | 0.15 | 65 | 20 | 0.11 | 59 | 17 |
| | 500 | 0.4 | 82 | 50 | 0.2 | 77 | 25 | 0.18 | 69 | 17 | 0.15 | 66 | 12 | 0.11 | 63 | 10 | 0.1 | 57 | 8 |
| P 07 | 1400 | 1.75 | 87 | 140 | 1.32 | 82 | 70 | 0.85 | 71 | 47 | 0.63 | 69 | 35 | 0.5 | 66 | 28 | 0.38 | 61 | 23 |
| | 1000 | 1.25 | 86 | 100 | 0.92 | 81 | 50 | 0.63 | 70 | 33 | 0.49 | 68 | 25 | 0.37 | 65 | 20 | 0.28 | 60 | 17 |
| | 500 | 0.82 | 84 | 50 | 0.66 | 79 | 25 | 0.4 | 68 | 17 | 0.29 | 66 | 12 | 0.24 | 63 | 10 | 0.17 | 58 | 8 |
| P 1 | 1400 | 3.4 | 92 | 140 | 1.8 | 90 | 70 | 1.3 | 83 | 47 | 1.1 | 80 | 35 | 0.8 | 75 | 28 | 0.6 | 66 | 23 |
| | 1000 | 2.5 | 91 | 100 | 1.3 | 89 | 50 | 1 | 81 | 33 | 0.9 | 79 | 25 | 0.6 | 74 | 20 | 0.5 | 65 | 17 |
| | 500 | 1.6 | 89 | 50 | 1 | 87 | 25 | 0.7 | 78 | 17 | 0.75 | 76 | 12 | 0.4 | 72 | 10 | 0.35 | 62 | 8 |
| P 2 | 1400 | 8.3 | 91 | 140 | 4.1 | 88 | 70 | 3.3 | 78 | 47 | 2.3 | 75 | 35 | 1.75 | 72 | 28 | 1.3 | 67 | 23 |
| | 1000 | 5.7 | 90 | 100 | 3.1 | 87 | 50 | 2.6 | 77 | 33 | 1.9 | 74 | 25 | 1.4 | 70 | 20 | 0.9 | 65 | 17 |
| | 500 | 3.3 | 88 | 50 | 2 | 85 | 25 | 1.6 | 75 | 17 | 1.2 | 73 | 12 | 0.9 | 68 | 10 | 0.6 | 62 | 8 |
| P 3 | 1400 | 9.8 | 91 | 140 | 6.1 | 86 | 70 | 4.4 | 80 | 47 | 3.6 | 78 | 35 | 3 | 74 | 28 | 2.3 | 70 | 23 |
| | 1000 | 7.8 | 89 | 100 | 5 | 85 | 50 | 3.5 | 78 | 33 | 2.8 | 77 | 25 | 2.3 | 73 | 20 | 2 | 69 | 17 |
| | 500 | 4.7 | 87 | 50 | 3 | 83 | 25 | 2.3 | 76 | 17 | 2.1 | 75 | 12 | 1.6 | 71 | 10 | 1.5 | 67 | 8 |
| P 4 | 1400 | 20 | 91 | 140 | 12 | 89 | 70 | 9.5 | 83 | 47 | 8 | 79 | 35 | 6.4 | 70 | 28 | 4 | 65 | 23 |
| | 1000 | 17 | 90 | 100 | 9.5 | 88 | 50 | 7.1 | 81 | 33 | 6.1 | 78 | 25 | 4.7 | 59 | 20 | 3.5 | 64 | 17 |
| | 500 | 10 | 88 | 50 | 5.3 | 86 | 25 | 4 | 80 | 17 | 3.2 | 76 | 12 | 2.5 | 67 | 10 | 2.1 | 62 | 8 |
| P 5 | 1400 | 25 | 90 | 140 | 17 | 85 | 70 | 13.5 | 82 | 47 | 9.6 | 80 | 35 | 7.8 | 75 | 28 | 4.5 | 69 | 23 |
| | 1000 | 23 | 89 | 100 | 15 | 84 | 50 | 10.5 | 81 | 33 | 7.8 | 79 | 25 | 5.8 | 74 | 20 | 3.9 | 68 | 17 |
| | 500 | 16 | 87 | 50 | 9 | 82 | 25 | 7.1 | 79 | 17 | 5 | 77 | 12 | 4.1 | 72 | 10 | 3 | 66 | 8 |
| P 6 | 1400 | 51 | 90 | 140 | 30 | 84 | 70 | 25 | 81 | 47 | 19 | 78 | 35 | 15 | 70 | 28 | 12 | 64 | 23 |
| | 1000 | 45 | 89 | 100 | 26 | 83 | 50 | 20 | 80 | 33 | 16 | 77 | 25 | 12.5 | 69 | 20 | 10 | 63 | 17 |
| | 500 | 28 | 88 | 50 | 17 | 82 | 25 | 13 | 79 | 17 | 9 | 76 | 12 | 6 | 67 | 10 | 6 | 61 | 8 |
| P 8 | 1400 | 85 | 90 | 140 | 50 | 84 | 70 | 33 | 81 | 47 | 26 | 78 | 35 | 23 | 71 | 28 | 18 | 64 | 23 |
| | 1000 | 74 | 89 | 100 | 43 | 83 | 50 | 29 | 80 | 33 | 23 | 77 | 25 | 19 | 70 | 20 | 15 | 63 | 17 |
| | 500 | 55 | 87 | 50 | 32 | 82 | 25 | 21 | 79 | 17 | 21 | 76 | 12 | 14 | 68 | 10 | 11 | 61 | 8 |

rpm : entrada

s. rpm: salida

ANGEL LARREINA S.A.